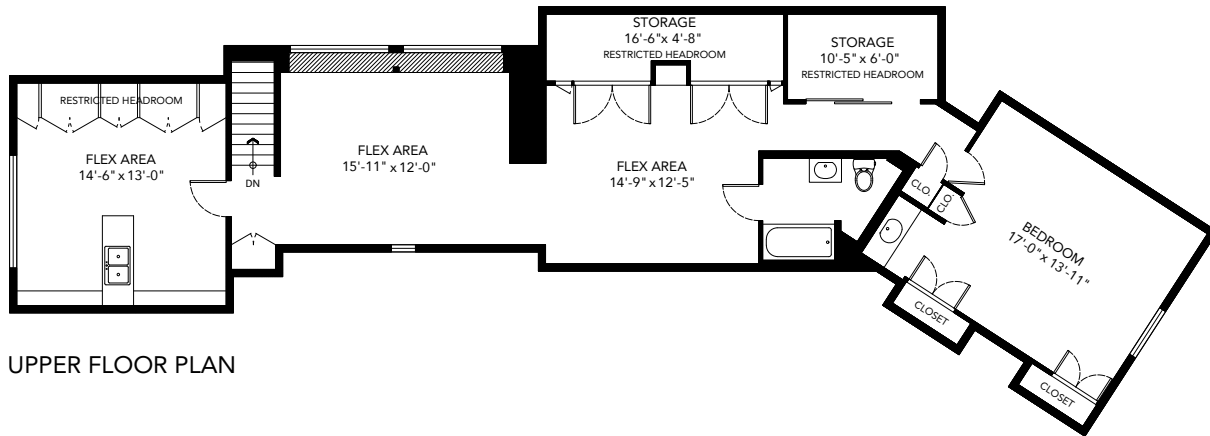


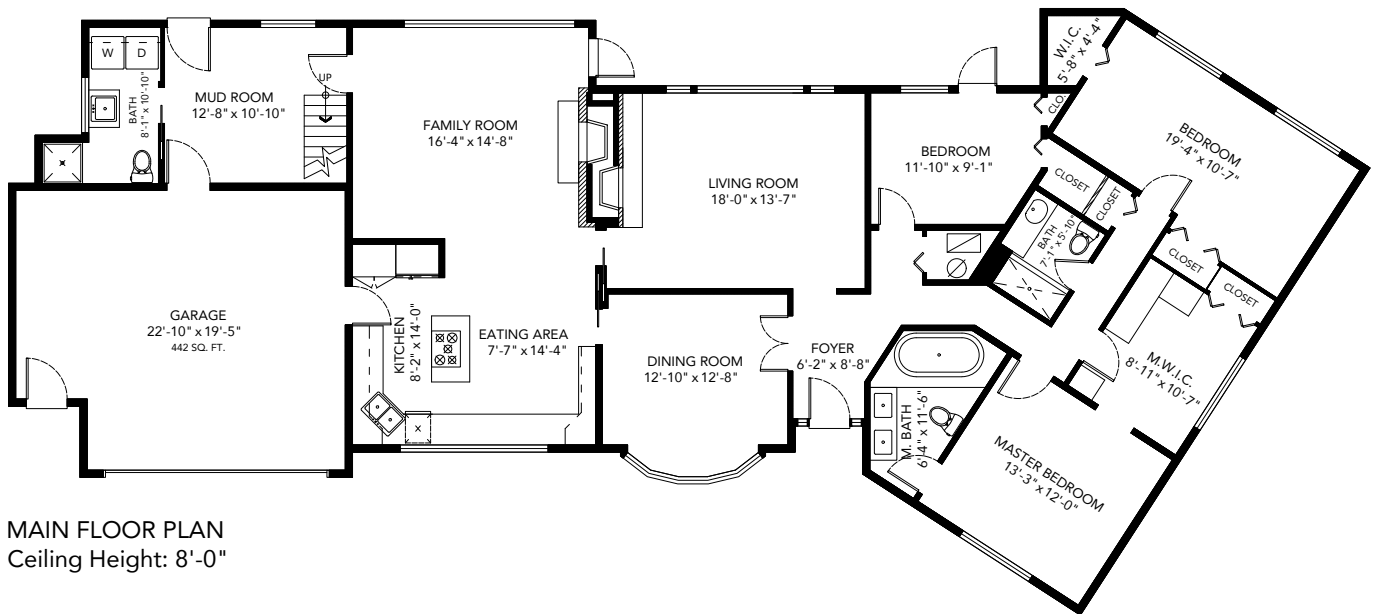
# 1084 Lodge Road, North Vancouver, BC

Upper Floor: 1104 SQ. FT.  
 Main Floor: 2159 SQ. FT.  
**Total: 3263 SQ. FT.**

Garage: 442 SQ. FT.  
 Restricted Headroom Areas:  
 271 SQ. FT.



UPPER FLOOR PLAN



MAIN FLOOR PLAN  
 Ceiling Height: 8'-0"



**Emily Sandhack** PREC\*  
 604-339-9150  
 emilysandhack@gmail.com

**Franco Diligenti** PREC\*  
 604-842-2668  
 franco@francodiligenti.com

\*PERSONAL REAL ESTATE CORPORATION. MEASUREMENTS ARE APPROXIMATE AND MAY NOT BE TO SCALE.  
 THE FLOOR PLAN ILLUSTRATION IS NOT SUITABLE FOR CONSTRUCTION/ARCHITECTURAL PURPOSES. E&O INSURED.

ALP Studio

