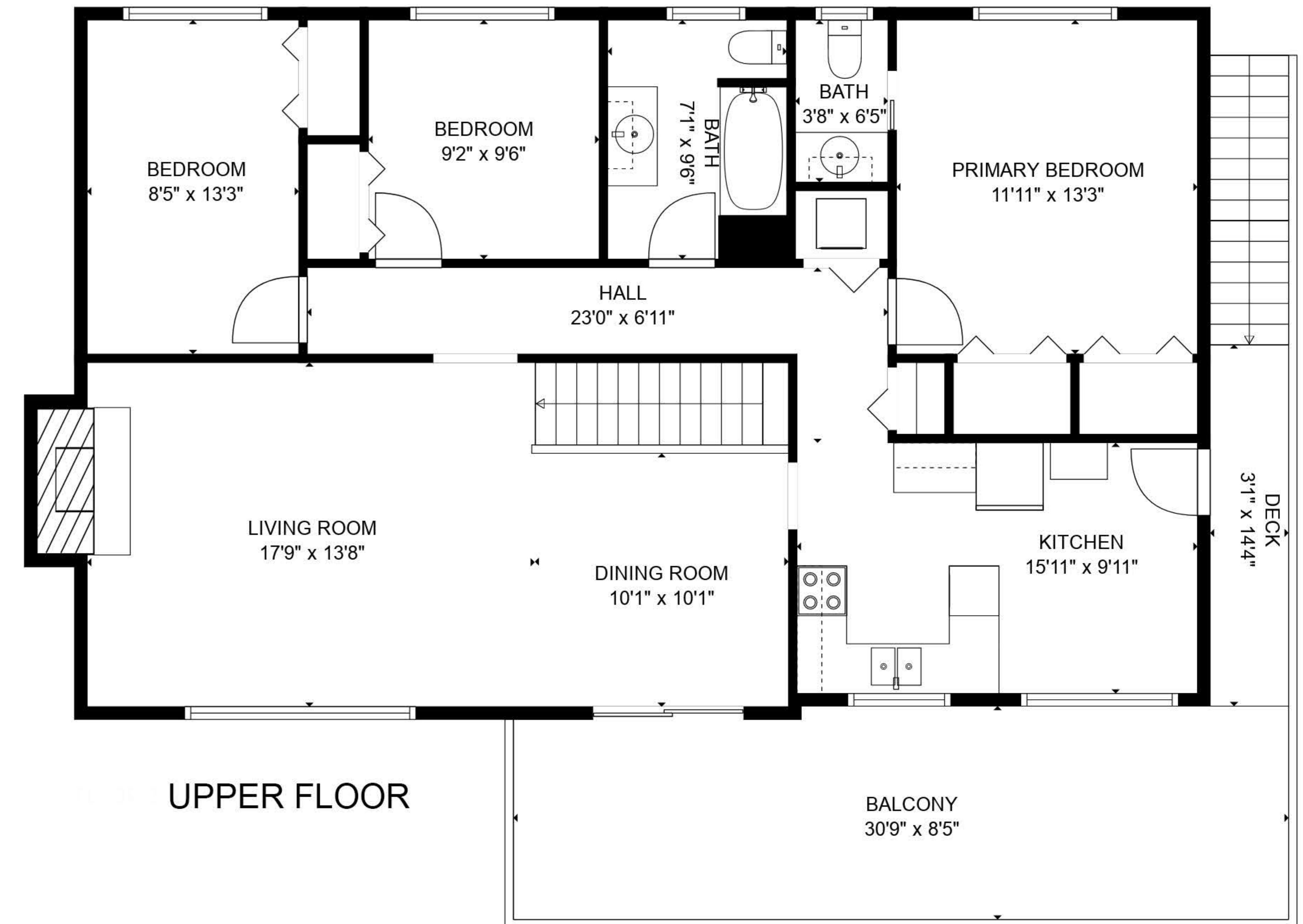
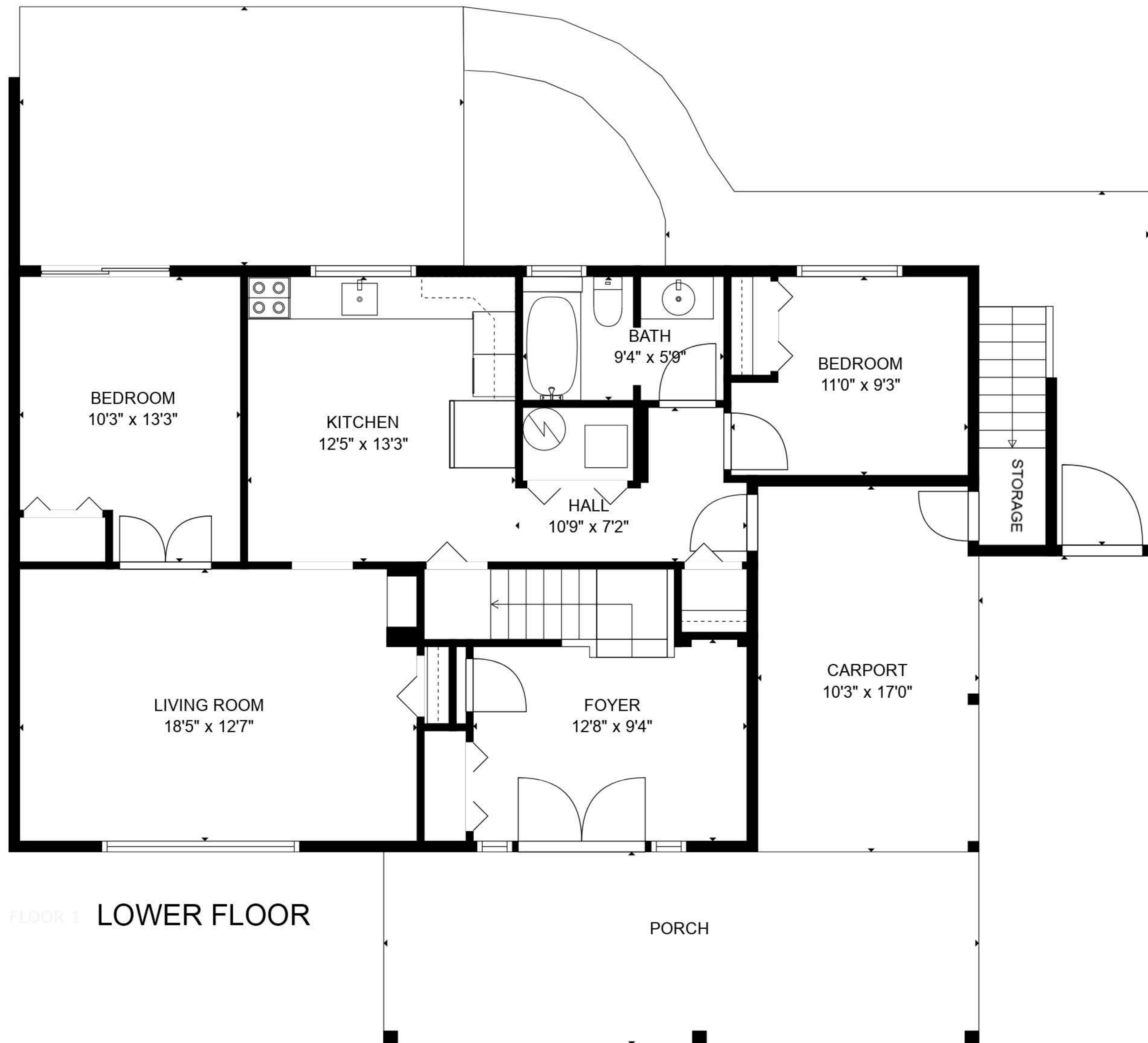


960 BERKLY ROAD NORTH VANCOUVER BC



| | |
|--------------|---------------------|
| Lower Floor | 982 SQ.FT. |
| Upper Floor | 1,319 SQ.FT. |
| Total | 2,301 SQ. FT |
| Balcony | 348 SQ FT |
| Patio | 259 SQ. FT. |
| Carport | 175 SQ. FT |



ENGEL & VÖLKERS
JESSE OLIVIER

LEO WILK
REAL ESTATE

ENGEL & VÖLKERS
RESIDE REAL ESTATE TEAM

FLOORPLAN CREATED BY:
PRIME FOCUS PICTURES
MAY 2023

MEASUREMENTS ARE APPROXIMATE AND MAY NOT BE TO SCALE.
THE FLOOR PLAN ILLUSTRATION IS NOT SUITABLE FOR CONSTRUCTION/ARCHITECTURAL PURPOSES.